

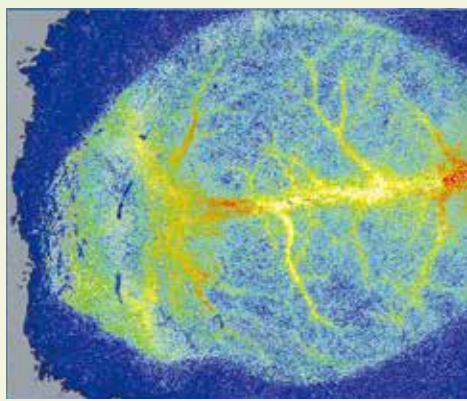


2-20-3 Katamachi, Fuchu, Tokyo Japan  
T E L : 042-352-1171  
F A X : 042-352-1173  
<http://www.omegawave.co.jp/>



Real **REAL IMAGE** in Color  
BEAT IMAGE

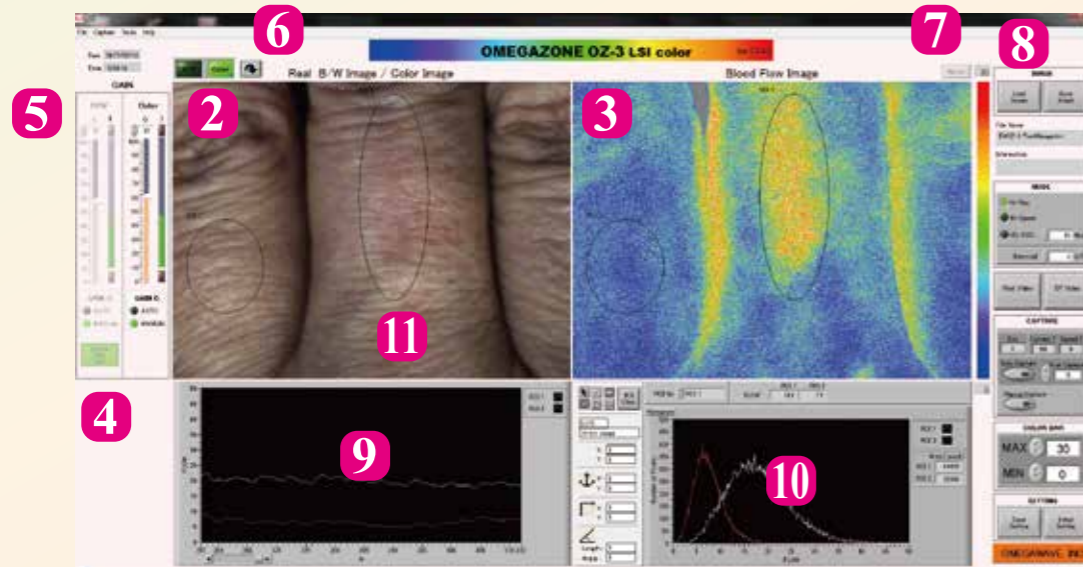
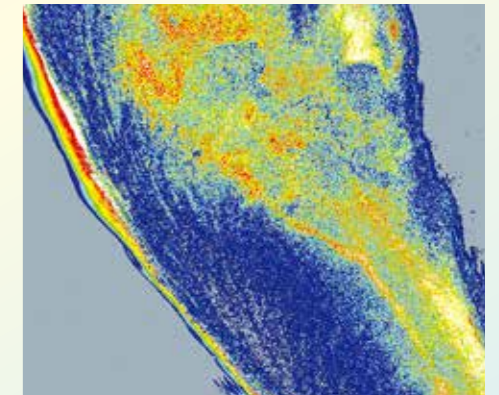
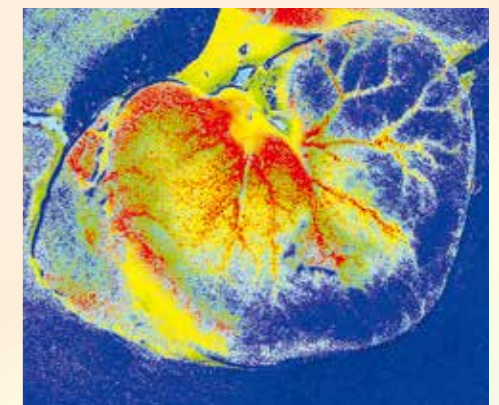
**LASER SPECKLE BLOOD FLOW IMAGER**



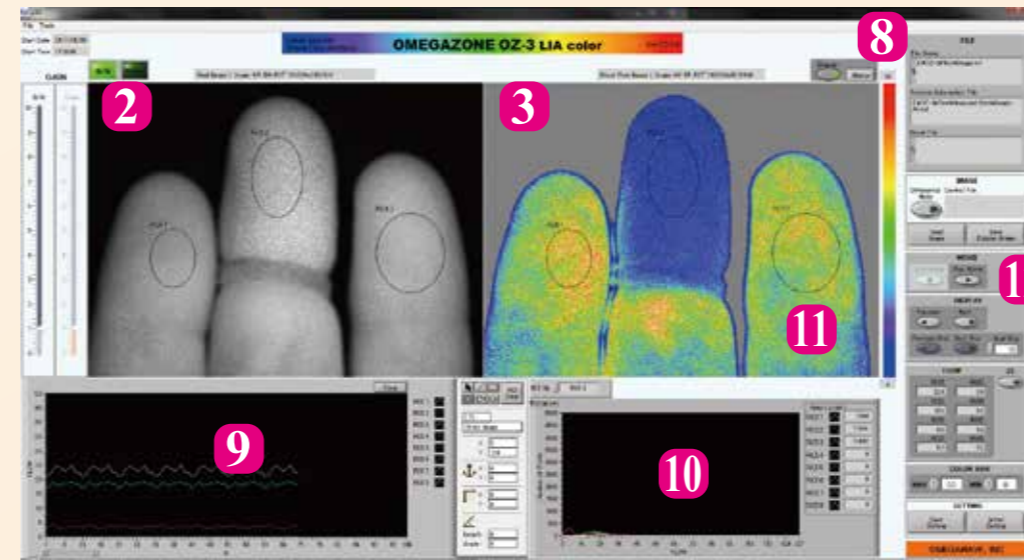
# OMEGAZONE OZ-3

One step ahead of them

Real time • High resolution • Color Real mage • 2D Laser Blood Flow Imager



1 Measurement software LSI



1 Analysis software LIA

## Functions and Features

- 1 The two software, the measurement and analysis, are installed, and the data can be analyzed after the measurement. The measurement area can be changed by changing lens.
- 2 Real Image : Selectable display of Color real image by room light or B/W image by laser light. Tissue condition is obtained from the color real image in detail. The brightness of the two real image can be adjusted.
- 3 Blood flow image : Blood flow is shown in color distribution. The three modes, Hi-Res(High Resolution), Hi-Speed(High Speed) and HS-AVG (Hi-Speed Average), can be selected to show the suitable image. The range of the color distribution is set by MAX and MIN.

- 4 Optical zero null : The intensity of the B/W real image can be set to zero when the laser light is not irradiated on tissue. This function eliminates the effect of the light from outside.
- 5 Auto gain controller : The intensity of the real images are automatically adjusted. The intensity can be manually adjusted, too.
- 6 Image rotation function : Images can be rotated by this function.
- 7 Marking on images : Marks can be added on the images and on the chart.
- 8 Color bars : Plural color bars are useful to obtain suitable blood flow images. Color bars are Standard, Enhanced, Blue-Red (for differential) and Gray scale.

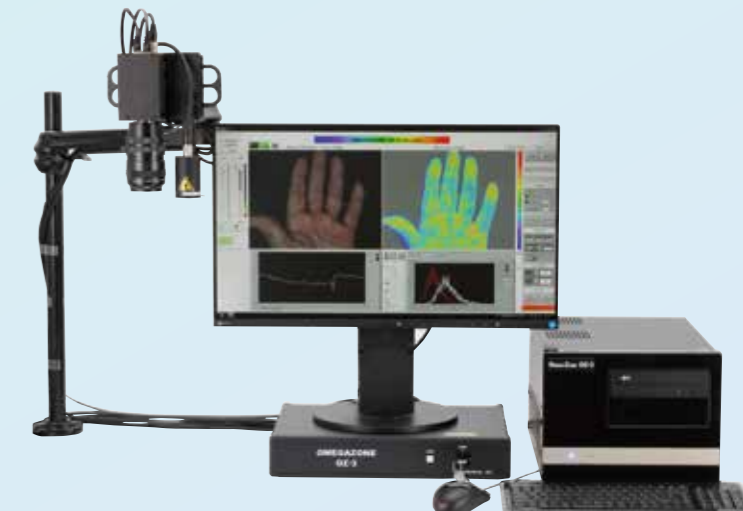
- 9 Chart : The time chart of the average blood flow values in ROIs is shown. The average blood flow values are saved as Excel file.
- 10 Histogram : The distribution of blood flow values inside ROIs is shown.
- 11 ROI : Selected area for acquiring blood flow distribution and the averaged value.
- 12 Play Movie : Saved images are replayed. Display number per second can be set.
- 13 Desk-top computer type has 2 HDDs for the programs and for the data.

## Specifications

Laser for measurement	780nm, Semi conductor, CLASS1M	OS	Windows 7 or Windows 10
Pointer laser	650nm, Semi Conductor, CLASS1	CPU	Core i5 or Core i7
Resolution	750-560 (Hi-Res mode), 250-186(Hi-Speed mode)	HDD	500 GB and over
CCD camera	GigE (Color & B/W)	MEMORY	4 GB and over
Frame rate	30 frames / sec	DISPLAY	Notebook type : 15.6 inch (1920-1080)
Measurement rate	Hi-Res : about 1 images/sec Hi-Speed : about 15 images/sec		Desk-top type : 24 inch (1920-1080)
Principle	Reduced Speckle Image		



■ Notebook computer type



■ Desk-top computer type